



# AIRO

Fall Meeting

November 12, 2019

ADHE UPDATE

SONIA HAZELWOOD

RESEARCH & ANALYTICS

# Announcements

## Welcome Newcomers



ARKANSAS COLLEGES OF  
HEALTH EDUCATION

Melissa Efurd, Ashley Gerhardson, Elizabeth McClain, Lori Jones & Glenna Gilliam



Northwest Technical Institute

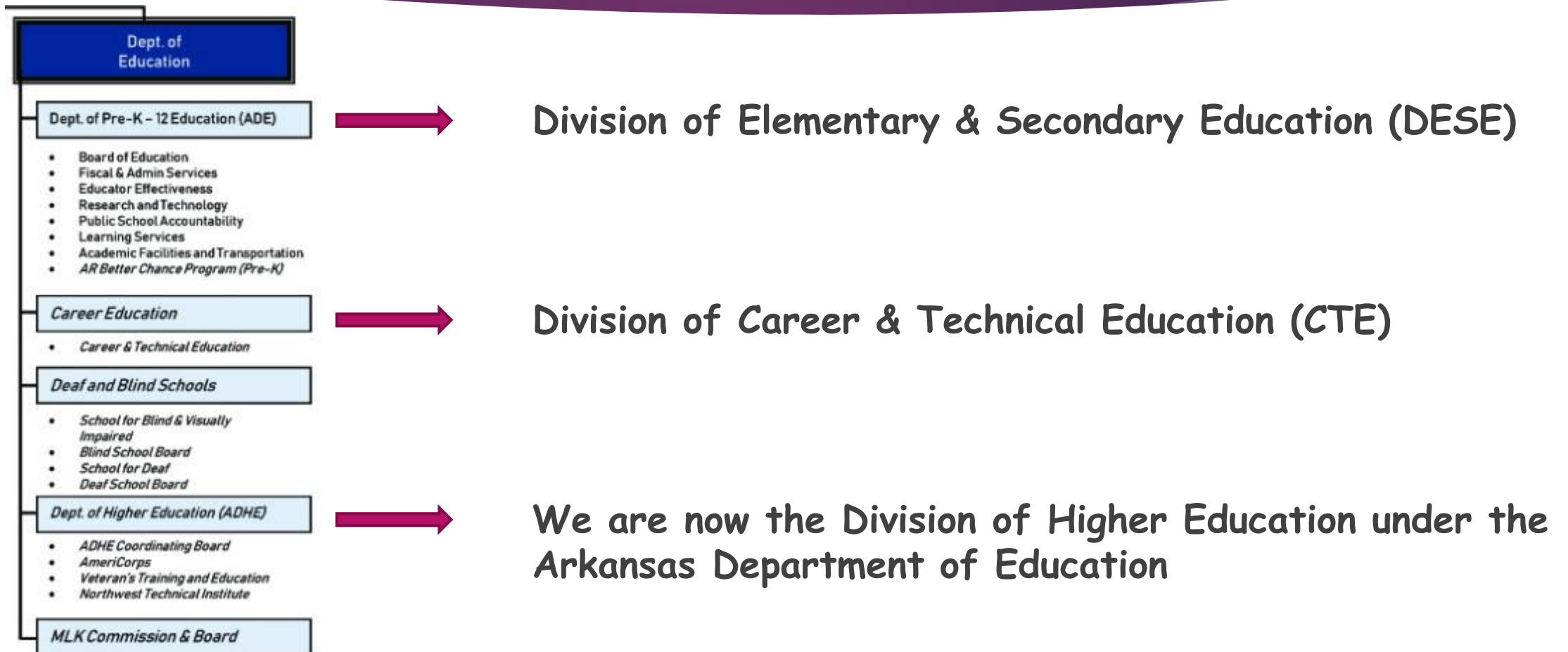
Ronni Hammond & Melissa Greenslade



Eric Atchison

New Campus Staff Introductions

# Department of Education Transformation Changes





Arkansas Governor ★ ★ ★ ★  
**ASA HUTCHINSON**

# ARKANSAS DEPARTMENT OF EDUCATION



Elementary & Secondary Education



Career & Technical Education



Higher Education



Arkansas State Library



Arkansas Schools for the Deaf & the Blind



MLK Commission & Board

The Arkansas State Library System, Schools for the Deaf & the Blind, and the MLK Commission and Board also fall under the newly formed Department of Education.



**Johnny Key**  
Secretary of the Department of Education

[Read Bio](#)

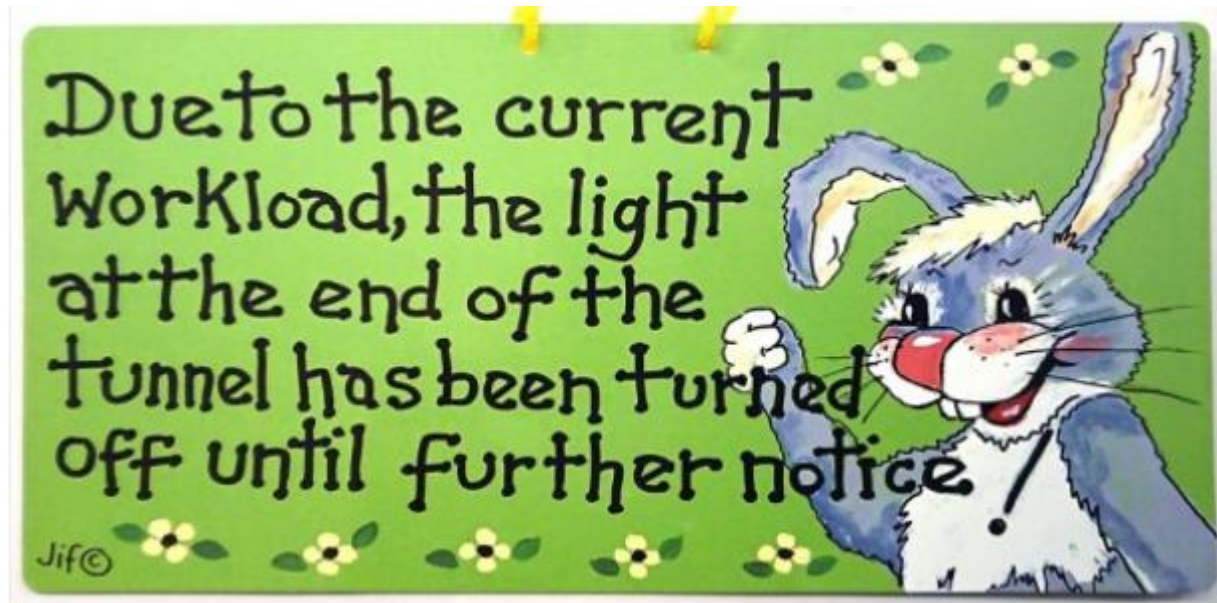
On May 22, 2019 – Governor Asa Hutchinson announced Johnny Key as the Secretary of the Department of Education as part of his plan to transform state government. Key currently serves the state as the Commissioner of the Arkansas Department of Education (ADE), soon to be known as the Division of Elementary and Secondary Education. He will continue to serve in both capacities.

# Department of Education Transformation Changes

- Transformation Teams
  - Looking for efficiencies and process/procedure improvements
- Data Sharing Discussions
  - Combining education agencies under one Department will streamline data sharing between the divisions
  - ADHE gains access to National Student Clearinghouse Data on high school graduates through the Division of Elementary and Secondary Education (DESE)
- Early 2020 Microsoft Office 365 implementation
  - Provides access to Microsoft Power BI for the analytics phase of the new AHEIS
- Access to ADE General Counsel
  - Currently reviewing all institutional reporting to ensure all state-supported institutions are in compliance with Arkansas laws and AHECB policies

# AHEIS Implementation

This is how we felt at the beginning of August...



# AHEIS Implementation

This is how we feel now...



# AHEIS Update

New system has opened for the following file submissions:

- Public Institutions
  - Graduated Student (.grd and .sgrd)
  - Term (190 and 191.dat only)
  - Annual Instructor (After 190.dat completed FS)
  - Grade Updates
  - SSN Changes
  - End-of-Term (193 and 190.eot only)
  - Perkins 1 & 2
  - Financial Aid
- Private Institutions
  - Graduated Student (.grd and .sgrd)
  - Financial Aid
  - Term (190 and 191.dat only)
  - SSN Changes
- Coming Soon:
  - Athlete
  - EOT (Privates)
  - Workforce Course & Student
  - Prior Year Submissions
  - Finance (Late Spring)



# AHEIS Update

A **BIG** Thank You to ALL of our AHEIS System Testers!!



## Testing Superstar Awards Go To:

Arkansas Tech University - Wyatt, Brett & Bryan  
University of Central Arkansas - Amber, Kristin & Christa  
Arkansas State University Beebe - Rachel  
Northwest Arkansas Community College - Kim & Shelly

# AHEIS - Next Steps

- **Data Summaries**
  - Automated process in development for FS process
    - A PDF version of the data summary will appear in the O3-Automated AHEIS Reports folder (like Error Reports)
  - Future enhancement to make available in IV process to assist with data clean-up
  
- **Update of AHEIS Manual**
  - RA staff is working to update the AY 2020 AHEIS manual to include all changes that have been identified since the system went live in August.
  - A new version of the manual will be mailed out as soon as they are complete. For those not attending AIRO this week (Nov 13<sup>th</sup>), please email Sonia the mailing address where you want the manual sent.
  
- **Institutional Database - IDBs**
  - 2006 - Current
  - Current columns in AY 2020 manual moving forward for AHEIS (all columns in archived version)
    - Fields no longer in use will be removed
  - **Data Translation Process**
    - RA will make logical translations when possible (Attend Status, convert 0 to FT and 1 to PT)
    - Will confirm translations with SISAC in December
    - Expect first copy of your IDB sometime in January (We are moving on this as quickly as we can)

# AHEIS Data Translation Examples

gender	2006	2007	2008	2009	2010	2011	2012	2013	2014	2015	2016	2017	2018	2019	2020
1	128232	130863	135875	142967	155302	161967	163165	162289	159412	157181	157855	155357	150407	145822	0
2	196286	200253	207822	215771	233115	243171	243127	236622	229891	226119	223241	223299	222637	220813	0
3	0	0	0	0	0	0	0	0	0	0	0	0	0	398	0
F	0	0	0	0	0	0	0	0	0	0	0	0	0	1076	26484
M	0	0	0	0	0	0	0	0	0	0	0	0	0	391	15403
U	0	0	0	0	0	0	0	0	0	0	0	0	0	0	33

When data are missing (see first line below in red) we will look for another field where data provides an accurate solution. In this example, the Attendance Status will be determined using # of credit hours reported for student based on that field's definition in previous manuals.

attend_status	2006	2007	2008	2009	2010	2011	2012	2013	2014	2015	2016	2017	2018	2019	2020
	21	1	7	10	4	0	0	16	100	22	0	0	0	0	0
0	179810	180514	188030	195416	215581	227655	222127	212110	206889	200766	197568	194985	191433	187427	0
1	144687	150601	155660	163312	172832	177483	184165	186785	182314	182512	183528	183671	181611	179606	0
FT	0	0	0	0	0	0	0	0	0	0	0	0	0	670	19823
PT	0	0	0	0	0	0	0	0	0	0	0	0	0	797	22097

# AHEIS

We thank you for the very positive feedback we are receiving from all of you. Please do not hesitate to email if there is a system enhancement you would like us to consider. We are also very aware of the unusual circumstances all of you have had to endure over the past year during our implementation process. Your hard work and dedication is most appreciated.